





Price £1,195,000



Features

- Superior Executive Home
- Sought After Location
- Secluded Poisition
- Superbly Refurbished and Extended
- 30ft x 28ft Living Dining Kitchen
- Electric Gated Access

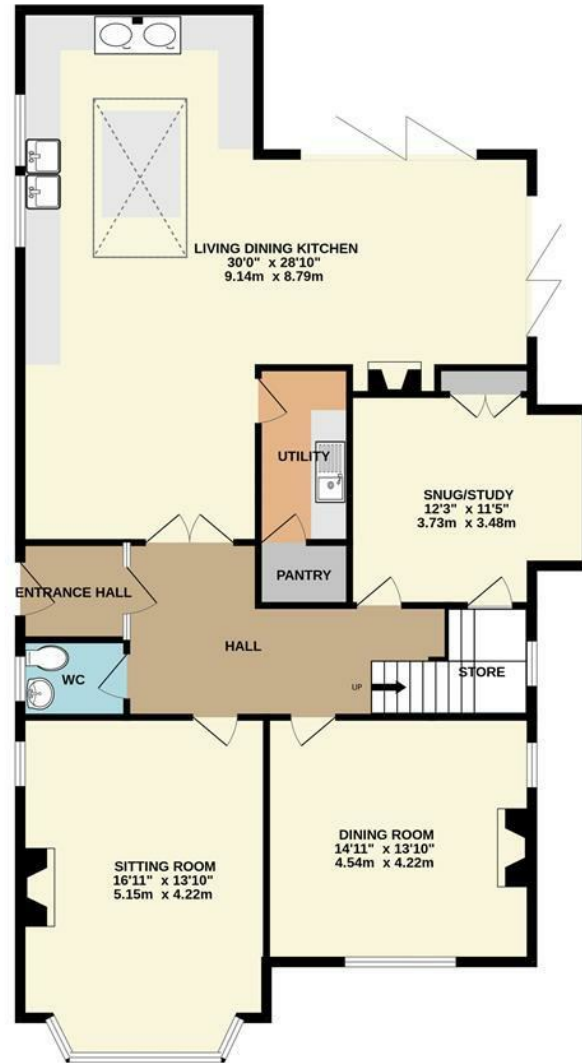
Standing in large private grounds behind electric gates, within one of Disleys most sought after areas, a truly stunning and beautifully restored, bay-fronted, detached executive residence. Extended and improved in recent years to provide balanced, spacious, high quality accommodation. Finished to an unbelievable standard, this substantial, period home is sure to impress. Dating back to 1904, with a wealth of character features and in brief comprising: entrance hall, sitting room, dining room, study, 30ft x 28ft open plan living dining kitchen with integrated appliances, AGA cooker and bi-folds opening to the terrace, utility room, first floor master bedroom with walk in wardrobe and spacious en-suite. three further double bedrooms (two en-suite) and a luxury bathroom. Large lawn garden, recently installed feature deck for al fresco dining and barbequing, generous secure driveway parking and detached double garage. Viewing highly recommended



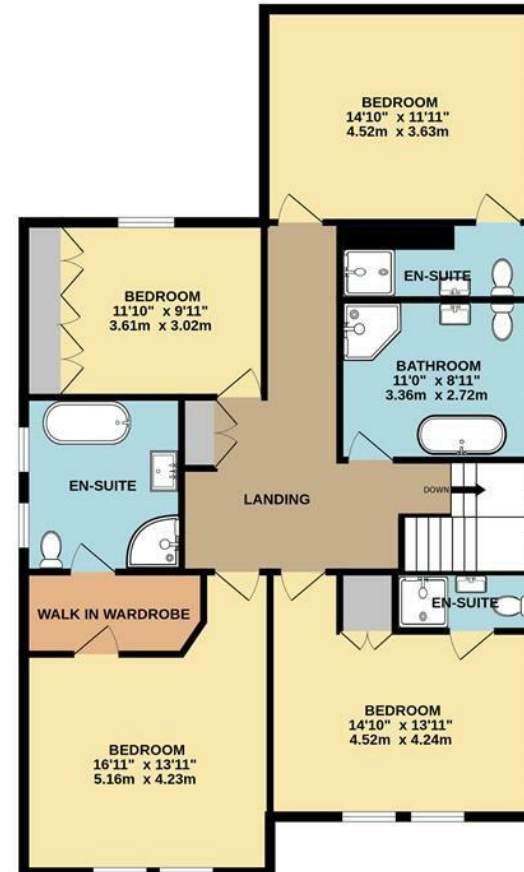
Disley is situated on the east of Cheshire and is the gateway to the Peak District. It lays claim to the famous National Trust owned Lyme Park which offers the largest house in Cheshire and was used for filming part of Pride and Prejudice. Disley maintains the charming village feel with many amenities including the local infant school, independent shops, public houses and restaurants. Ideally placed on the Manchester Piccadilly to Buxton railway line and the recently completed new relief road to Manchester airport, make the village ideal for the commuter of today. With the High Peak on our doorstep, those wanting the escape to outdoors wont have to travel too far!



GROUND FLOOR



1ST FLOOR



Whilst every attempt has been made to ensure the accuracy of the floorplan contained here, measurements of doors, windows, rooms and any other items are approximate and no responsibility is taken for any error, omission or mis-statement. This plan is for illustrative purposes only and should be used as such by any prospective purchaser. The services, systems and appliances shown have not been tested and no guarantee as to their operability or efficiency can be given.

Made with Metropix ©2023



IMPORTANT: we would like to inform prospective purchasers that these sales particulars have been prepared as a general guide only. A detailed survey has not been carried out, nor the services, appliances and fittings tested. Room sizes should not be relied upon for furnishing purposes and are approximate. If floor plans are included, they are for guidance only and illustration purposes only and may not be to scale. If there are any important matters likely to affect your decision to buy, please contact us before viewing the property.